

**HARIKRISHNA**

**CONCRETE SOLUTIONS**

A SUPERIOR QUALITY MATERIALS



**ISO 9001:2015 CERTIFIED COMPANY**

## ABOUT US

**HARIKRISHNA GROUPS** PROMOTES TO MANUFACTURE BEST QUALITY OF READYMIX CONCRETE, CRUSHED STONE, KAPCHI, GRID, GSB, RUBBAL, FLY-ASH, GYPSUM, G.G.B.S, AAC BLOCK, BLOCK JOINT MORTAR, WALL PUTTY, WALL PRIMER, FLOOR HARDNER, FLOOR CLENER, TILE ADHESIVE, TILE CLEANER, EPOXY GROUT, WATER PROOFING ADHESIVE, QUARTZ SAND, RIVER SAND, CRUSHED SAND, SILICA SAND, READY MIX PLASTER, & PRECAST PRODUCTS.

We utilize latest technology to our products which are eco-friendly and cost effective to our customers.

We actualize fair trading practise, meticulous manufacturing skills of our employees, customer centric philosophy and family core values to ensure a loyal customer base globally.

## OUR VISION



"TO BRING INSPIRATION, SUSTAINABLE, QUALITY & INNOVATION TO EVERY CONSTRUCTION MATERIALS IN THE WORLD"

## OUR MISSION



- To perform for our customers the highest level of quality construction services
- To be the preeminent provider of superior construction services by consistently improving the quality of our product
- To maintain the highest levels of professionalism, integrity, honesty and fairness in our relationships with our suppliers, subcontractors, professional associates and customers.

## CORE VALUES

### QUALITY

Companies are judged by the craftsmanship of their products and services, so the highest standards must be maintained.

### INTEGRITY

Acting with strong ethics is a priority for everyone representing the organization as well as the company's behavior as a whole.

### HONESTY

It's not just the best policy. It's a core business practice to act in a transparent, trustworthy manner that earns the respect of colleagues, customers, and the public

### FAIRNESS

Treating everyone with the common decency we all deserve and expect.

### TEAM WORK

When people work together, they can create something greater than themselves as individuals.

## OUR GROUP

THE HARIKRISHNA GROUP is manufacturing with latest innovations under newest technology and is **Certified ISO 9001:2015 Company**.

### THE GROUP APPENDAGE EMBRACE

**SAHAJANAND METALS**

SINCE 1988

**HARIKRISHNA CONCRETE SOLUTIONS**

SINCE 2017

**SAHAJANAND ENTERPRISE**

SINCE 2018

**AKSHAR LOGISTICS**

SINCE 2019

**PRAMUKH CONSTRUCTION**

SINCE 2021

**CREATIVE CONSULTANCY**

SINCE 2019

THE HARIKRISHNA GROUP is a diversified business group focused principally on premium construction. Its business covers a combination of, manufacturing, processing, concrete solutions, adhesive solutions, precast solutions, water proofing solutions, and building development, activities.

## PRODUCT INTRODUCTION

- Ready-Mix Concrete (RMC) Is Concrete That Is Manufactured In A Batch Plant, According To Each Specific Job Requirement (Which All The Raw Materials Are Weighing Batched And Mixed At A Central Batching Plant), Then Delivered To The Job Site "Ready To Use".
- Ready-Mix Concrete Refers To Concrete That Is Specifically Manufactured For Customers Construction Projects, And Supplied To The Customer On Site As A Single Product. It Is A Mixture Of Portland Or Other Cements, Water And Aggregates: Sand, Gravel, Or Crushed Stone. All Aggregates Should Be Of A Washed Type Material With Limited Amounts Of Fines Or Dirt And Clay. An Admixture Is Often Added To Improve Workability Of The Concrete And/Or Increase Setting Time Of Concrete (Using Retarders) To Factor In The Time Required For The Transit Mixer To Reach The Site.

## RMC PROCESS CHART



## QUALITY ASSURANCE

- All The Raw Materials Are Stacked In Separate Bins And Are Stored Under Cover So That Aggregates Are Not Exposed To Direct Sunlight And Pollutions.
- Ensures Quality Check For Each Inward Raw Material.
- Laboratory Ensures Quality Assurance For Each Batch Of Concrete.
- Qualified And Skilled Professionals Manning Each Stage Of Operation.
- Consistent Quality With Every Batch.
- Assurance Of Desired Compressive Strength In Each Batch Of Concrete.
- Super Vision During Concrete Pouring And After Completion

## BATCHING PLANT DETAILS

MAKE OF BATCHING PLANT	SCHWING STETTER
Capacity Of Plant	CP-30 Per Hour
Plant Production Utilization	24 X 7
No. Of Transit Mixtures	8 NOS Each TM Carrying Capacity Of 7 CBM
No Of Concrete Pump	SchwingStetter Make 1400-D (2 Nos.)
Main Power	DGVCL – 120 KVA
Power Standby	DG Set Of 180 KVA, Mahindra
Material Feeding	Belt Conveyor (Coarse & Fine Aggregates) Screw Conveyor (Cement & Fly Ash)
Mixer Type	Single Shaft Pan
Silos	200 MT (Cement) 80 MT (Flyash)
Weigh Bridge	100 MT Capacities
Batching Operating System	SCHWING STETTER
Max. Distance Up To Supplies Permitted	50 Kms From The Plant Location

## RAW MATERIAL SOURCES

CEMENT	OPC-53 GRADE (ULTRATECH/AMBUJA/JK SUPER)
Flyash	GNFC
Coarse Aggregates	Sahajanand Metals Of Chikhli (OWN CRUSHER PLANT)
Fine Aggregates	Nareshwer, Bodeli, Manufacture Crushed Wash Sand
Admixture	Brands Like Yahska/Chryso/Mapei
Water	Potable Water Supply

## CALIBRATION SCHEDULE

Cement	Every 3 Months
Coarse Aggregates	Every 3 Months
Fine Aggregates	Every 3 Months
Admixture	Every 3 Months
CTM-Compressive Test Machine	Yearly ( By Manufacturer )

**ISO 9001:2015 CERTIFIED COMPANY**

## MATERIAL TESTING FREQUENCY

PHYSICAL TESTS	COARSE AGG.	FINE AGG.	CEMENT	FLY ASH
Sieve Analysis	Daily	Daily		
F.I. & E.I. Index	Monthly			
Silt Content		Daily		
Specific Gravity	Monthly			
Water Absorption	Monthly			
Impact Test	Monthly			
DLBD	Monthly	Monthly	Monthly	Monthly
Fineness			Daily	Daily

## FINISHED PRODUCT TESTING FREQUENCY

Type Of Test	Concrete
Workability	Per Lot
Yield	Per Client
Compressive Strength	As Per IS

## TM & PUMP DETAIL

- Total 8 Nos Of TM With Capacity Of 7 Cu.M In each TM.
- Total 2 Nos Of Pump Having Pipeline Capacity Up To 100mtr Each.
- The Mixing Drum and Spirals Are Made Of Highly Wear Resistant Steel with A High Performance Of Chromium (0.8%) And Nickel (0.6%).
- Transit Mixer Is To Be Covered With Hessian Cloth, Which Is To Be Maintained Wet When TM Is In Use For Maintaining Of Temperature Of Concrete.
- Own Diesel Tanker For Smooth Movement & Working Of Pump & TM

## ADVANTAGES

- The Use of High Tech Technology, Consistent Methods Produce Excellent Quality Concrete.
- Less Time Consuming and Delivered In Ready To Use Condition. Can Easily Be Delivered To Multiple Sites With in A Project.
- Does Not Require Storage Of Construction Materials At The Site.
- Less Air And Noise Pollution At The Job Site
- Wastage Of Materials At The Site Is Minimal.
- Economy in the Use of Raw Materials Results In Conservation Of Natural Resources.
- Small Or Large Quantities Of Concrete Can Be Delivered Timely At The Construction Site.
- It Reduced Man-Made Errors At The Site As RMC Has Less Dependency On Human Labourers.
- It Improved Durability Of Concrete.
- Ready Mix Concrete Is Environmental-Friendly.

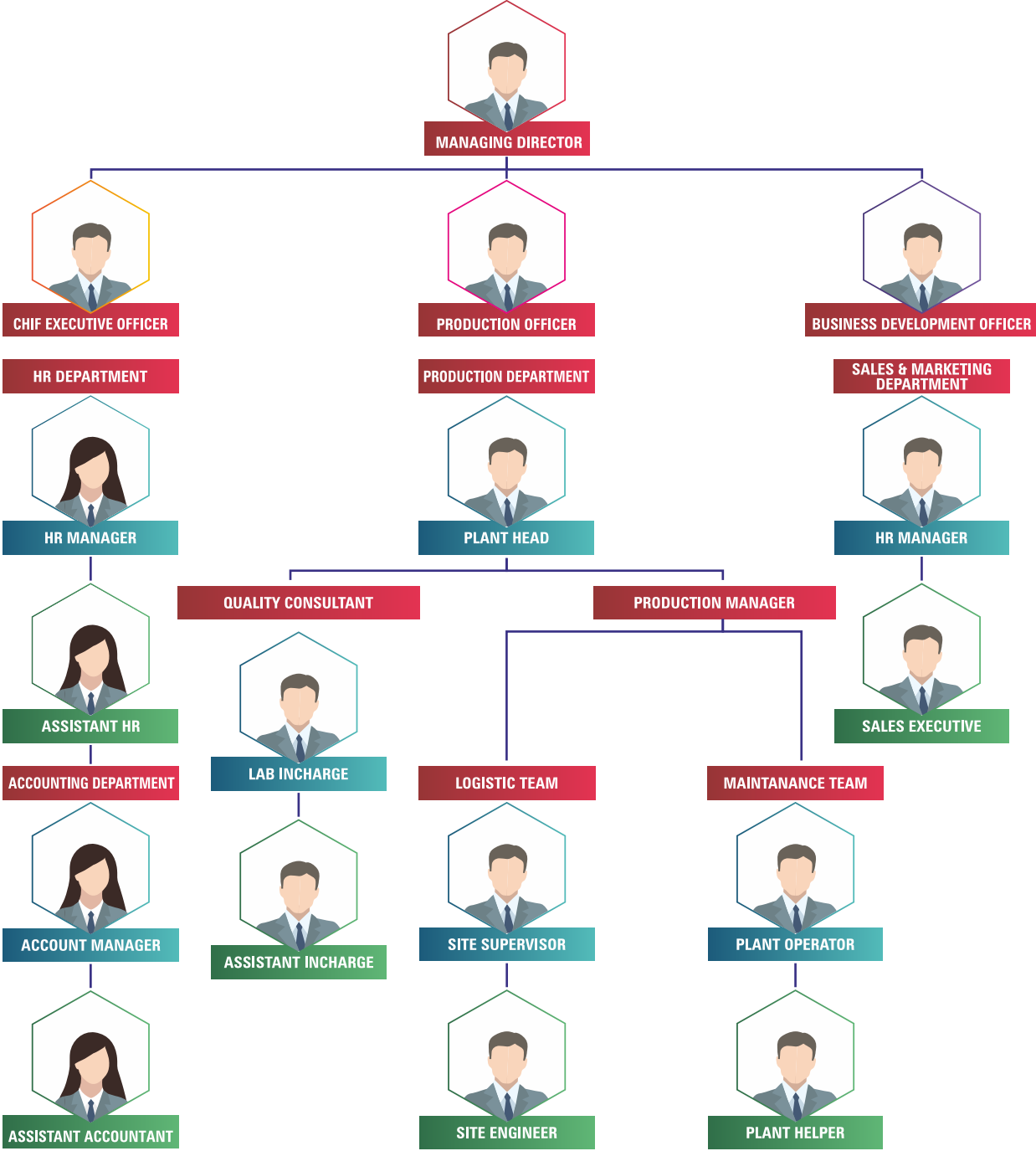
## AVAILABLE MIXES AND GRADES

<b>PLAIN CONCRETE</b>	1. DLC
	2. PCC
	3. M 5
	4. M 10
	5. M 15
<b>STANDARD CONCRETE</b>	1. M 20
	2. M 25
	3. M 30
	4. M 35
	5. M 40
	6. M 50
<b>SPECIAL CONCRETE</b>	1. Free Flow Concrete
	2. Semi Fee Flow Concrete
	3. Fibre Concrete,
	4. Temperature Controlled Concrete
	5. Light Weight Concrete
	6. Semi Water Proof Concrete
	7. Corrosion Proof Concrete
	8. Durable Concrete

## OUR MANUFACTURING UNITS



# ORGANIZATION CHART



# CERTIFICATES



**ISO 9001:2015 CERTIFIED COMPANY**

- HARIKRISHNA GROUP Introducing New Green Building Product Known As GGBS.
- GROUND GRANULATED BLAST FURNACE SLAG (GGBS OR GGBFS) Is An Environmentally Friendly Product And Made From A By-product Of Iron Manufacturing.
- GROUND-GRANULATED BLAST FURNACE SLAG Is Highly Cementitious And High In Calcium Silicate Hydrates (CSH) Which Is A Strength Enhancing Compound Which Improves The Strength, Durability And Appearance Of The Concrete.

## ADVANTAGES



**BETTER WORK ABILITY & COMPACTION**



**INCREASED STRENGTH & DURABILITY**



**HIGH FINENESS**



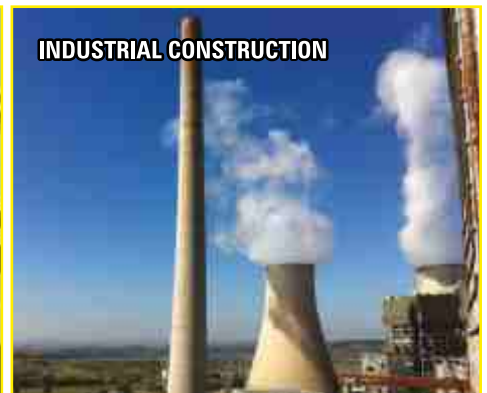
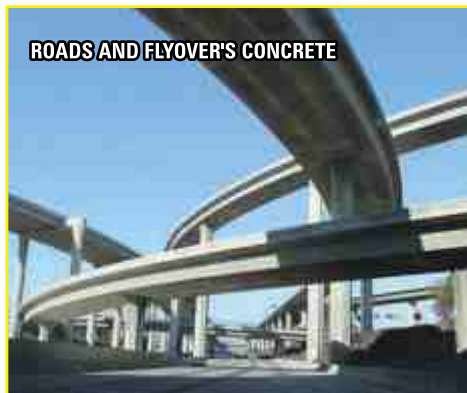
**GOOD PUMPABLE CHARACTERISTICS**



**MORE CHEMICALLY STABLE**



**GOOD SURFACE FINISH**



## TECHNICAL SPECIFICATIONS

PARAMETERS	GGBFS	IS 16174-2018 AND DRAFT CODE OF GGBS CIRCULATED BY BIS
COLOURS	Grayish White	GRAYISH WHITE
PECIFIC GRAVITY	2.85 TO 2.95	2.85 TO 2.95
GLASS CONTENT	95 + 3	95 + 3
FINENESS ( M2/KG )	450 + 20	450 + 20
SOUNDNESS		
i) LE-CHATELIER ( MM )	2.0	2.0
SLAG ACTIVITY INDEX	70 %	70 %
ii) 7 DAYS	90%	90%
ii) 28 DAYS		
PROPORTION OF USE	20% TO 70%	20% TO 70%





# GYPSUM PLASTER

## WHAT IS GYPSUM?

Gypsum is a soft sulfate mineral composed of Calcium sulfatedi hydrate ( $\text{CaSO}_4 \cdot 2\text{H}_2\text{O}$ ). It is widely used as a fertilized, in mould, in sculptures and as plaster material. Gypsum is a chalk like material and is very light in weight. It is available in crystalline form in nature.

### HK GYPSUM PLASTER

In recent years, the construction sector has witnessed a number of new trends, technology advancements and innovations across applications, all aimed at making construction faster and delivering higher performance.

**HK GYPSUM PLASTER** can be applied directly on any brick, solid or hollow blocks, AAC blocks and plaster boards. Gypsum plaster has good insulation properties, fire resistant and impact resistant. Also, gypsum saves a lot of time during construction and has superior finish. These properties have clearly drawn attention of real estate builders and contractors towards choosing gypsum plaster over traditional cement plaster.

## ADVANTAGES

EASE OF APPLICATION

NO CURING TIME REQUIRED

SMOOTH FINISH

NO SHRINKAGE CRACKS

HIGH PRODUCTIVITY

FIRE RESISTANT

QUICK SETTING TIME

HIGH PERFORMANCE

LOW THERMAL CONDUCTIVITY



## TECHNICAL SPECIFICATIONS

PARAMETERS	SPECIFICATIONS
COLOUR	White Powder
HARD DRYING	6 – 8 HR
Compressive Strength	8.5 Mpa
Flexural Strength	2.1 Mpa
Water REQUIREMENT	40 – 45 % MIXING OF PAINT FOR APPLICATION
Pot Life	2 TO 3 HR
Applied thickness each coat	1.5 mm
Coverage	12-15 Sq.ft/kg depending on wall finish



# GRIT AGGREGATES



**HARIKRISHNA**  
CONCRETE SOLUTIONS  
A SUPERIOR QUALITY MATERIALS



## KAPCHI OR GRIT OR CRUSHED STONE OR ANGULAR ROCK

is a form of construction aggregate, typically produced by mining a suitable rock deposit and breaking the removed rock down to the desired size using crushers. It is distinct from naturally occurring gravel, which is produced by natural processes of weathering and erosion and typically has a more shape.

**SIZE : 10MM | 20MM | 25MM | 40MM**

# GRANULAR SUB-BASE (GSB)



RCC ROAD

**Granular Sub-base (GSB)** consists of laying and compacting well graded material on prepared sub-grade in accordance with the specifications.: GSB layer is intermediate layer in between Sub-grade and Wet mix macadam. GSB layer is laid in roads and highway works due to its properties.



DAMAR ROAD



**SIZE :**  
**MIXING OF POWDER TO 40 MM**

# RUBBLE STONE

**Rubble STONE** is a form of construction aggregate, typically produced by mining a suitable rock deposit and breaking the removed rock down to the desired size using crushers. It is distinct from naturally occurring gravel, which is produced by natural processes of weathering and erosion and typically has a more shape.

**SIZE : MIXING OF 80 MM TO 230 MM**



HEAVY RCC & DAMAR ROAD  
STRUCTURE



RIVER FRONT STRUCTURE



### WHAT IS SAND?

Sand is a granular material composed of finely divided rock and mineral particles. Sand has various compositions but is defined by its grain size. Sand grains are smaller than gravel and coarser than silt. Sand can also refer to a textural class of soil or soil type; i.e., a soil containing more than 85 % sand-sized particles by mass

The composition of sand varies, depending on the local rock sources and conditions, but the most common constituent of sand in inland continental settings and non-tropical coastal settings is silica (silicon dioxide, or SiO2), usually in the form of quartz.

Sand is a non-renewable resource over human timescales, and sand suitable for making concrete is in high demand. Desert sand, although plentiful, is not suitable for concrete.

# SAND



FOR EXCELLENT CONSTRUCTION WE ARE SUPPLING RIVER SAND AND CRUSHED SAND.



**BROWN SAND**



**BLACK SAND**



**CRUSHED SAND**

# AAC BLOCK

THE AAC BLOCKS/ FLY ASH BLOCKS Are Used As A Substitute For The Conventional Building Masonry And Accepted Globally. These Precast Building Elements Are Environment-friendly And We Have Been Able To Manage Bulk Order Within The Assured Time Frame Owing To Our Large Production Capacity. Harikrishan Groups Manufactures Best Quality Aac Blocks From The High Grade Materials Fly-ash, Cement, Lime, Gypsum, Aluminum Surfactants In Slurry From Mixed In Automation Batch Mixer.harikrishan Groups Prepares High Strength And Light Weight AAC Blocks.

## BENEFITS

**HIGHLY COST EFFECTIVE**

**SAVE MATERIALS**

**EXCELENT WORK ABILITY**

**EASY TRANSPORTATION**

**COMFORTABLE FOR WORKING**

**FIRE TERMITE & MOISTURE RESISTANT**

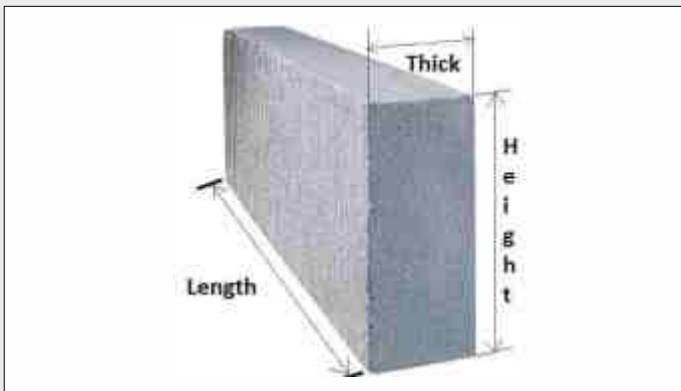
**SOUND RESISTANT**

**ECO-FRIENDLY & NON TOXIC**

**ROUGH SURFACE**

**RAPID CONSTRUCTION**

**LIGHT WEIGHT SIZE**



## AAC BLOCKS AVAILABLE IN SIZE

SIZE			TOTAL VOLUME OF CBM	PER CBM PIECE	FACE AREA (SQ.FT.)
L	H	T			
600	200	50	0.006	166.67	1.29
600	200	75	0.009	111.11	1.29
600	200	100	0.012	83.33	1.29
600	200	125	0.015	66.67	1.29
600	200	150	0.018	55.56	1.29
600	200	200	0.024	41.67	1.29
600	200	225	0.027	37.04	1.29
625	240	50	0.0075	133.33	1.61
625	240	75	0.01125	88.89	1.61
625	240	100	0.015	66.67	1.61
625	240	125	0.01875	53.33	1.61
625	240	150	0.0225	44.44	1.61
625	240	200	0.03	33.33	1.61
625	240	225	0.03375	29.63	1.61

## TECHNICAL SPECIFICATION

Density (oven Dry )	550 - 650 kg/m <sup>3</sup>
Compressive Strength	> 3 mpa
Shear Strength	0.6 mpa
Modulus Of Elasticity	2040 mpa
Size Tolerance	( +-1)
Water Absorption (at Equilibrium)	8%
Thermal Conductivity	0.16 w/ m k
Thermal Resistance ® Value)	0.46 m k/w
Drying Shrinkage	0.04%
Fire Shrinkage	4 hrs (for 200 mm wall)
Sound Reduction	37-42 db



# BLOCK JOINT MORTAR

HK Block Joint Mortar Is An Eco Friendly, Polymer Modified, Mineral Based Ready To Use Powder Form Used For Fixing Of All Kind Of AAC Blocks, Concrete Blocks, & Other Absorbent Bricks. It Improved Compressive And Tensile Strength. It Can Be Used For Both Interior And Exterior Purposes. HK Block Joint Mortar Meets Astm-C-1660-09 Quality Standards.

## ADVANTAGES

<b>EXCELLENT BONDING</b>	<b>GOOD WORKABILITY EASY TO USE</b>	<b>CONSISTENT WORK QUALITY</b>
<b>PLASTER MAKING AFTER 24HR OF APPLICATION</b>	<b>NO CURING REQUIRED</b>	<b>SAVE TIME</b>
<b>COST EFFECTIVE</b>	<b>LOW CRACK RESISTANCE</b>	<b>LESSER SHRINKAGE</b>

## TECHNICAL SPECIFICATIONS

PARAMETERS	SPECIFICATIONS
Appearance	Grey Powder
Water Required	35%
Pot Life	~1.5 - 2 hrs
Curing	Not required
Tensile Adhesive Strength	>0.41 MPa (as per ASTM - C1660)
Coverage	170 - 180 sq.ft (for 4" thick blocks)
ADHESIVE THICKNESS	2 TO 4 MM



## READY MIX PLASTER

HK Ready Mix Plaster Is A Polymer Reinforced Portland Cement Based Ready Mix Plaster Used For Exterior And Interior Walls. HK Ready Mix Plaster High Content In Polymer, Additives, It Is Control Shrinkage As Well As Improved Workability, Curing, Saving Time And Cost. HK Ready Mix Plaster Recommended Plastering On Ceiling, Concrete Surface, Bricks And AAC Blocks.

## ADVANTAGES

<b>LESSER CURING TIME</b>	<b>ENHANCED WATERPROOFING OF PLASTERING SURFACE</b>
<b>CRACK FREE PLASTERING</b>	<b>MINIMUM WASTAGE OF RESOURCES</b>
<b>BETTER WORKABILITY</b>	<b>INCREASES RELIABILITY IN POST PLASTERING QUALITY ASSURE</b>
<b>LOWERS THE COST OF THE CONSTRUCTION WITH BETTER QUALITY</b>	

## TECHNICAL SPECIFICATIONS

PARAMETERS	SPECIFICATIONS
Colour	Gery Powder
Compressive Strength	> 9 Mpa @ 28days
Flexural Strength	> 1.8 Mpa @28 Days
Water REQUIREMENT	17 – 19 %
Pot LifeWater	90 Minutes
Retention	Min. 95%
Applied Thickness Each Coat	6 - 12 Mm
Coverage	15 - 20 Sq.Ft / 40kg Bag (10 – 12 Mm Thickness)



# WALL PUTTY



**HARIKRISHNA**  
CONCRETE SOLUTIONS  
A SUPERIOR QUALITY MATERIALS

HK WALL PUTTY is a specially formulated product based on polymer modified white cement blended with special additives to be used as putty, filler, and sealer, on concrete / mortar walls and ceiling. HK WALL PUTTY renders to the surface smooth bright white coating suitable for over coating giving a durable and smooth finish on the walls. It also used for interiors & exteriors.



## ADVANTAGES

EASY TO USE AND APPLY

UV RESISTANCE

SUITABLE FOR INTERIOR & EXTERNAL WALL

WATER RESISTANT

EXCELLENT ADHENSION & DURABILITY

COST EFFECTIVENESS

EXCELLENT WHITENESS & SMOOTH FINISH

## TECHNICAL SPECIFICATIONS

PARAMETERS	SPECIFICATIONS
COLOUR	White Powder
HARD DRYING	6 – 8 HR
Compressive Strength	8.5 Mpa
Flexural Strength	2.1 Mpa
Water REQUIREMENT	40 – 45 % MIXING OF PAINT FOR APPLICATION
Pot Life	2 TO 3 HR
Applied thickness each coat	1.5 mm
Coverage	12-15 Sq.ft/kg depending on wall finish



# OUR CUSTOMERS



## THE GROUP APPENDAGE EMBRACE

**SAHAJANAND METALS**

SINCE 1988

**HARIKRISHNA CONCRETE SOLUTIONS**

SINCE 2017

**SAHAJANAND ENTERPRISE**

SINCE 2018

**AKSHAR LOGISTICS**

SINCE 2019

**PRAMUKH CONSTRUCTION**

SINCE 2021

**CREATIVE CONSULTANCY**

SINCE 2019



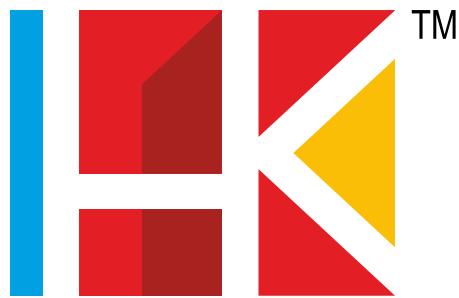
📍 110, Samarth Acquisti, New Citylight Road, Althan, Surat, INDIA. ☎️ (0) +91 96244 83779, 96874 46779 (P) 96248 97779

✉️ info@harikrishnagroups.com 🌐 www.harikrishnagroups.com

**DISCLAIMER:** While the technical detail & recommendations contained in this document and the related details given by the representatives of the company correspond to the best of our knowledge & experience, all the above information must in any case be considered as merely indicative and subject to confirmation. Users are recommended to conduct a product suitability test before it is used at full scale. In any case, the consumer alone is entirely liable for any consequences resulting from using the product. Our company policy is one of on-going R&D. therefore we reserve the right to update this information without prior notice at any time. As the correct identification of the difficulties, the quality of other materials used, on-site environmental conditions and the workmanship on-site are factors beyond our control, there is no express or implied guarantee/warranty as to the results achieved. Suggestions made either verbally or in writing by the company may be followed, modified or rejected by the owner, engineer or contractor, since they are solely responsible for carrying out procedures appropriate to a specific application. The information herein is based upon the excellent information available at the time of printing.

**ISO 9001:2015 CERTIFIED COMPANY**





# HARIKRISHNA

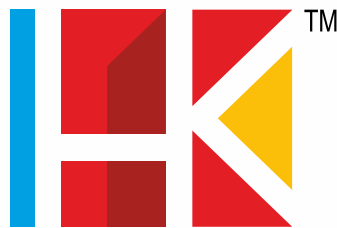
CONCRETE SOLUTIONS

A SUPERIOR QUALITY MATERIALS

## OUR PRODUCTS

GRIT AGGREGATES	GGBS	WALL PUTTY
GRANULAR SUB-BASE (GSB)	READY MIX CONCRETE	TILE ADHESIVE
RUBBLE STONE	AAC BLOCK	TILE EPOXY GROUT
CRUSHED SAND	BLOCK JOINT MORTAR	TILE CLEANER
BROWN SAND	READY MIX PLASTER	WATERPROOFING SOLUTIONS
BLACK SAND	GYPSUM PLASTER	SBR

# HARIKRISHNA CONCRETE SOLUTIONS



**HARIKRISHNA**

**CONCRETE SOLUTIONS**

A SUPERIOR QUALITY MATERIALS

📍 110, Samarth Acquisti, New Citylight Road, Althan, Surat, INDIA. ☎️ (0) +91 96244 83779, 96874 46779

✉️ [info@harikrishnagroups.com](mailto:info@harikrishnagroups.com) 🌐 [www.harikrishnagroups.com](http://www.harikrishnagroups.com)

**ISO 9001:2015 CERTIFIED COMPANY**